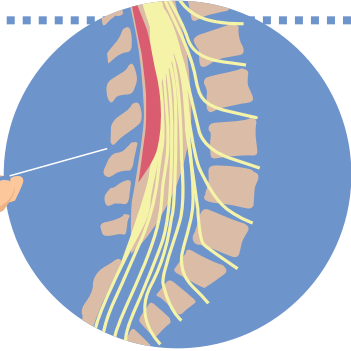




## NEUROLOGICAL MONITORING AFTER SPINAL / EPIDURAL

Spinal cord complications are **RARE** but **SERIOUS**



### INFORM

PATIENT OF TIMING

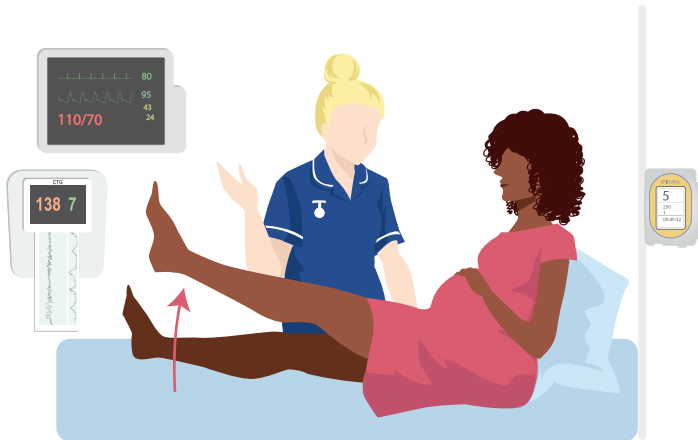
Patients should be encouraged to alert staff if this is delayed

Resolution of Block

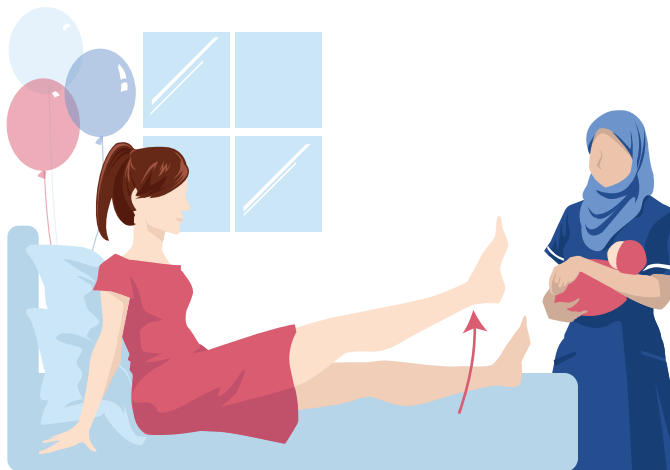
**3-5 HOURS**



### SCREEN STRAIGHT LEG RAISE



**EVERY HOUR DURING LABOUR EPIDURAL**



**4 HOURS AFTER LAST SPINAL OR EPIDURAL DOSE**

### ESCALATE

Unable

**ALERT THE ANAESTHETIST**

Early intervention can prevent permanent injury